

Park Five Bags 93-75 Triumph

Gary Grelick, Bruce Brandl and Jeff Weisberg teamed for 62 points Friday to pace Park School to a 93-75 victory over Pebble Hill of Syracuse in a Conference of Upstate Private School basketball game at Park.

Grelick and Brandl each scored 21 points and Weisberg contributed 20 as Park made its CUPS record 2-3 and its season mark, 4-8. The Syracuse team has a 2-4 conference standing.

The victory avenged an earlier setback to Pebble Hill this season. Bill Huntley and Gene Isaacs paced Pebble Hill with 26 and 21 points, respectively.

| PEBBLE HILL | | PARK | |
|-------------|----------|------------|----------|
| G | F | G | F |
| Barnes f | 5 0 10 | Buck f | 1 0 2 |
| Isaacs f | 5 11 21 | Grelick f | 9 3 21 |
| Huntley c | 12 2 26 | Weisberg g | 8 4 29 |
| Torralli g | 1 1 3 | Lewis g | 7 2 16 |
| Draper g | 3 3 9 | Brandl g | 10 1 21 |
| Cummings | 0 0 0 | Allen | 4 1 9 |
| Eckerl | 1 4 6 | Farber | 0 0 0 |
| Donning | 0 0 0 | Robinson | 2 0 4 |
| Totals | 27 21 75 | Totals | 41 11 93 |

Park Quint Bows, 95-84

Lakemont Academy of Rochester handed Park School its fourth defeat of the CUPS League basketball campaign, 95-84, Friday on the losers' court.

The visitors held a 31-18 advantage at the half, and Park School took the lead briefly, 54-53 in the third quarter. Lakemont rallied from there and never trailed after going out in front.

Lakemont tops the conference standing with a 6-1 record. Park is 2-4.

Jeff Weisberg was high for Park with 28 points, followed by Gary Grelick's 27. In double figures for Lakemont were Greg Browski 25, Tom Smith 22, Dave Sindleman 19, Dick Shaffer 18, and Ken Sarnoski 10.

| LAKEMONT | | PARK | |
|-------------|----------|------------|----------|
| G | F | G | F |
| Borowski f | 11 3 25 | Buck f | 2 1 5 |
| Shaffer f | 5 8 18 | Robinson f | 2 0 4 |
| Smith c | 8 6 22 | Grelick c | 12 3 27 |
| Sarnoski g | 5 11 21 | Weisberg g | 11 6 28 |
| Sindleman g | 7 5 19 | Farber g | 0 0 0 |
| Groth | 0 0 0 | Lewis | 4 2 10 |
| Totals | 36 23 95 | Totals | 35 12 84 |

Guess the Winner Here! DeVeaux 39%, Park 15%

Special to Buffalo Evening News

NIAGARA FALLS, Feb. 10.—The Park School basketball team Tuesday night shot only 15% from the floor—14 of 88—in losing, 41-38, to host DeVeaux. DeVeaux shot 39%—19 of 48—in the non-league game. Bill Earl led the winners with 10 points. Bruce Brandl had 13 for Park. The box score:

| DEVEAUX (41) | | (38) PARK | |
|--------------|---------|-----------|----------|
| G | F | G | F |
| Brand | 3 1 7 | Buck | 0 1 1 |
| Madden | 4 0 8 | Robinson | 1 0 2 |
| Earl | 4 2 10 | Grelick | 2 2 6 |
| Sevifert | 4 0 8 | Weisberg | 3 4 10 |
| Skovron | 1 0 2 | Lewis | 3 0 6 |
| Fitz-Gerald | 3 0 6 | Brandl | 5 3 13 |
| Totals | 19 3 41 | Totals | 14 10 38 |

Allendale Five Conquers Park

Special to The Courier-Express

ROCHESTER — Jim Criticos scored 24 points to pace Allendale to a 71-56 basketball triumph over the Park School of Williamsville Friday night. The setback dropped Park's record to 4-13. Park finished in the Conference of Upstate Private Schools basement.

| PARK | | ALLENDALE | |
|------------|----------|------------|---------|
| G | F | G | F |
| Buck f | 0 0 0 | Lovejoy f | 5 4 14 |
| Brandl f | 7 5 19 | Kendall f | 9 0 18 |
| Weisberg c | 4 2 10 | Criticos c | 12 0 24 |
| Robinson | 0 0 0 | Goldman g | 0 0 0 |
| Farber | 0 0 0 | Slain g | 5 0 10 |
| Totals | 22 12 56 | Totals | 33 5 71 |

Eleven of Clarence's 12 players contributed to the scoring in a 72-42 rout over visiting non-conference foe Park School. Bob Orr paced the winners with 20 points, while Gary Grelick's 15 topped Park.

| PARK SCHOOL | | CLARENCE | |
|-------------|----------|-----------|----------|
| G | F | G | F |
| Buck f | 0 1 1 | Abell f | 2 1 5 |
| Brandl f | 1 0 2 | Binger f | 5 0 10 |
| Weisberg c | 4 3 11 | Clarey c | 4 0 8 |
| Grelick g | 5 5 15 | Orr g | 6 8 20 |
| Robinson | 1 0 2 | Strauss | 1 2 4 |
| Farber | 0 0 0 | D. Peters | 3 3 9 |
| Totals | 16 10 42 | Totals | 26 16 72 |

BEE'S All-Area Basketball Team



GREG HAMPTON-Williamsville



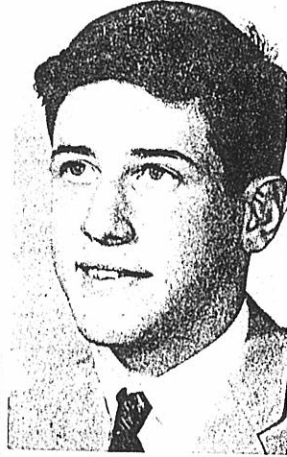
THOM LEHMAN - Amherst



CRAIG LIEBLER - Sweet Home



TOM FERRERI - Amherst



GARY GRELICK - Park

Amherst Bee's All-Area Cage Team

| PLAYER | SCHOOL | HGT. | WGT. | CLASS | PSYN |
|---------------|---------------|-----------|------|--------|------|
| Greg Hampton | Williamsville | 6' 0" | 140 | Senior | F |
| Thom Lehman | Amherst | 6' 3 1/2" | 180 | Senior | F |
| Craig Liebler | Sweet Home | 6' 3" | 160 | Senior | C |
| Gary Grelick | Park | 6' 1" | 170 | Senior | G |
| Tom Ferreri | Amherst | 5' 8 1/2" | 143 | Senior | G |

HONORABLE MENTION

Amherst: Mike Cowan, Don Drexel, Dan Howells; Williamsville: Dick Paul, Ed Hauck; Sweet Home: Ed Smith; Park: Jeff Weisberg, Bruce Brandl; Neumann: George Fraas, Fran Daumen.

Amherst Central, the E.C.I.C. Division I champions, has placed two players on THE AMHERST BEE'S All-Area Basketball Team. Thom Lehman and Tom Ferreri both won berths along with Greg Hampton of Williamsville, Craig Liebler of Sweet Home and Gary Grelick from Park School.

Ferreri was the playmaker of the Amherst team, and Tom also came through a number of times with clutch scoring outputs. The 5'8 1/2" guard used his ability to drive in for a layup or take the outside shot to score 183 in 12 league games for a 15.2 average. Tom was the leader of Amherst's comeback victory over Maryvale last Friday in the class AAA playoff game. Tom scored 17 points in the last half as the Tigers were losing 23-17.

Thom Lehman's consistent scoring led the Tigers throughout the season. Thom's left-handed jump shot foiled the efforts of many a defensive player. The 6'3 1/2" forward scored 265 points in 12 league games for an average of 22.0. Thom was also outstanding in the rebounding department, covering both the offensive and defensive boards. The services of Lehman will be sorely missed by the Tigers next year.

The area scoring leader, Greg Hampton, was the bright spot in an off season for the Billies. Greg scored 286 points in 12 league games for a 23.8 average. Greg could do everything on the court well. He led the Billies in rebounding and was outstanding on defense. Greg, known as "Dime" to his teammates, often took the role of "Quarterback" of the Billies.

often took the role of "Quarterback" of the Billies.

6'1" Gary Grelick is Park School's entry on the area cage team. Gary was valuable to coach Herb Mols, not only as a scorer, but was an outstanding ball handler and could always be counted on for top effort on defense. Gary scored 251 points in 14 games for an average of 17.9, to rank third in area scorers.

Rounding out the team is Craig Liebler of Sweet Home. Craig could be counted on for a consistent scoring output as well as a top rebounding job. The 6'3" senior finished fifth in area scoring with a 181 point total in 12 games for a 15.0 average.

Harley Subdues Park Five, 62-45

Special to The Courier-Express

ROCHESTER — Harley School sent the Park School of Williamsville reeling to its 11th defeat in 15 basketball games, 62-45, Tuesday night. It was a Conference of Upstate Private Schools contest. Park's Jeff Weisberg was high scorer with 20 points. Teammate Bruce Brandl and Harley's Chip Lewis each tallied 16.

| PARK | | HARLEY | |
|------------|----------|-----------|----------|
| G | F | G | F |
| Buck f | 0 0 0 | Gilbert f | 6 2 14 |
| Brandl f | 6 4 16 | Wemett f | 6 0 12 |
| Grelick c | 1 4 6 | Lewis c | 6 4 16 |
| Lewis g | 1 1 3 | Randall g | 5 2 12 |
| Weisberg g | 7 6 20 | Cotton g | 2 1 5 |
| Robinson | 0 0 0 | Fallon | 1 1 3 |
| Farber | 0 0 0 | Smith | 0 0 0 |
| Totals | 15 15 45 | Totals | 26 10 62 |



All-League Basketball Star at Park

Gary Grelick, named today at guard on the all-league basketball team of the Conference of Upstate Private Schools, works in the science lab at the Park School. The 6-foot 1-inch senior co-captain at Park averaged 20 points a game. Also on the all-league team are Dick Shaffer, Lakemont, and Jim Criticos, Allendale, guards; Larry Lovejoy, Allendale, center; and Russ Colton, Harley, guard. Bruce Brandl of Park received honorable mention.